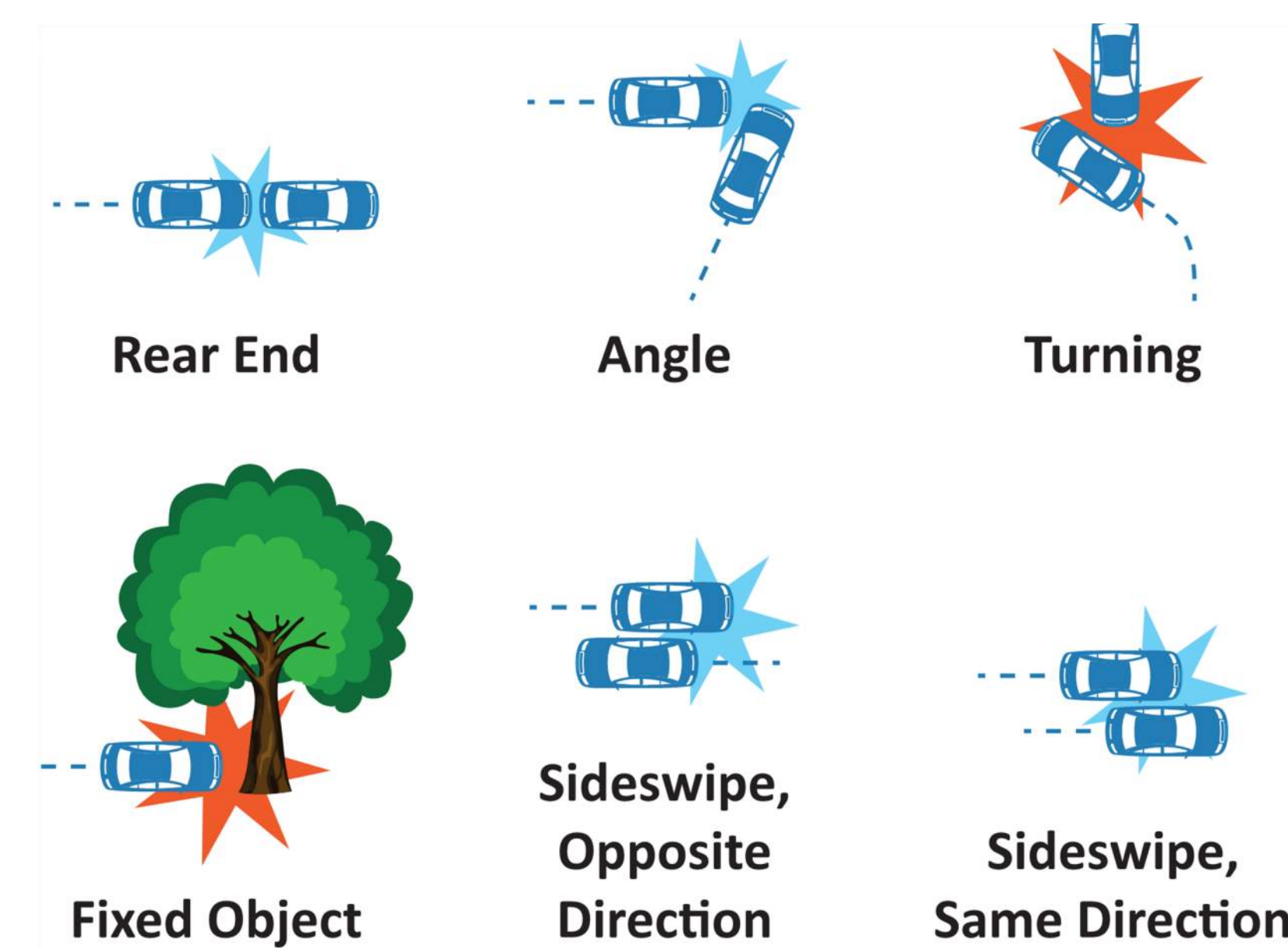


CRASH DATA (2006-2014)

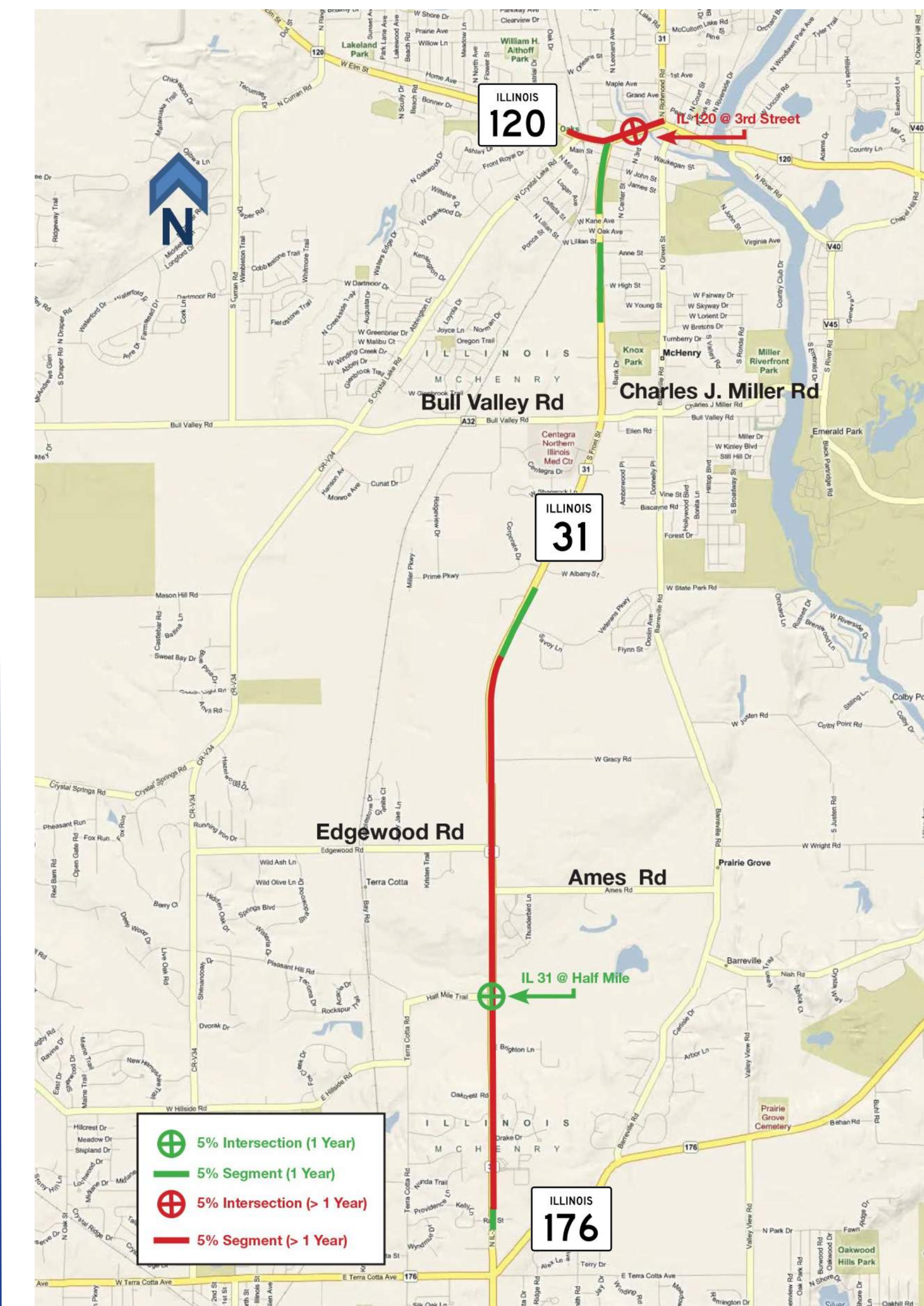
| Year | Total Crashes | Injury + Fatality Crashes ¹ | Injuries + Fatalities ² | Number of Injuries By Type | | | |
|--------------|---------------|--|------------------------------------|----------------------------|-----------|------------|------------|
| | | | | K | A | B | C |
| 2006 | 250 | 54 | 84 | 2 | 9 | 22 | 51 |
| 2007 | 253 | 72 | 111 | 4 | 14 | 59 | 34 |
| 2008 | 260 | 48 | 82 | 0 | 16 | 32 | 34 |
| 2009 | 150 | 49 | 73 | 0 | 15 | 30 | 28 |
| 2010 | 233 | 60 | 77 | 0 | 9 | 35 | 33 |
| 2011 | 220 | 53 | 64 | 0 | 5 | 28 | 31 |
| 2012 | 211 | 49 | 69 | 0 | 6 | 32 | 31 |
| 2013 | 202 | 57 | 81 | 0 | 10 | 21 | 50 |
| 2014 | 152 | 39 | 52 | 0 | 5 | 23 | 24 |
| TOTAL | 1931 | 481 | 693 | 6 | 89 | 282 | 316 |

1. Crashes that included an injury or fatality 2. Total injuries and fatalities in crashes

| Code | Severity | Injury Description |
|------|----------------------|---|
| K | Fatal | Any injury that results in death within 30 days of crash occurrence |
| A | Incapacitating | Any injury other than a fatal injury which prevents the injured person from walking, driving, or normally continuing the activities the person was capable of performing before the injury occurred |
| B | Injury Evident | Any injury other than a fatal injury or an incapacitating injury that is evident to observers at the scene of the crash in which the injury occurred |
| C | Injury Possible | Any injury reported that is not a fatal, incapacitating, or non-incapacitating evident injury |
| O | Property Damage Only | Damage to property that reduces its monetary value |



Five Percent Locations (2008 - 2015)



Locations along state highways that are identified as 5% locations are within the top 5% of locations statewide with the greatest potential for safety improvement, based on crash severity and frequency.